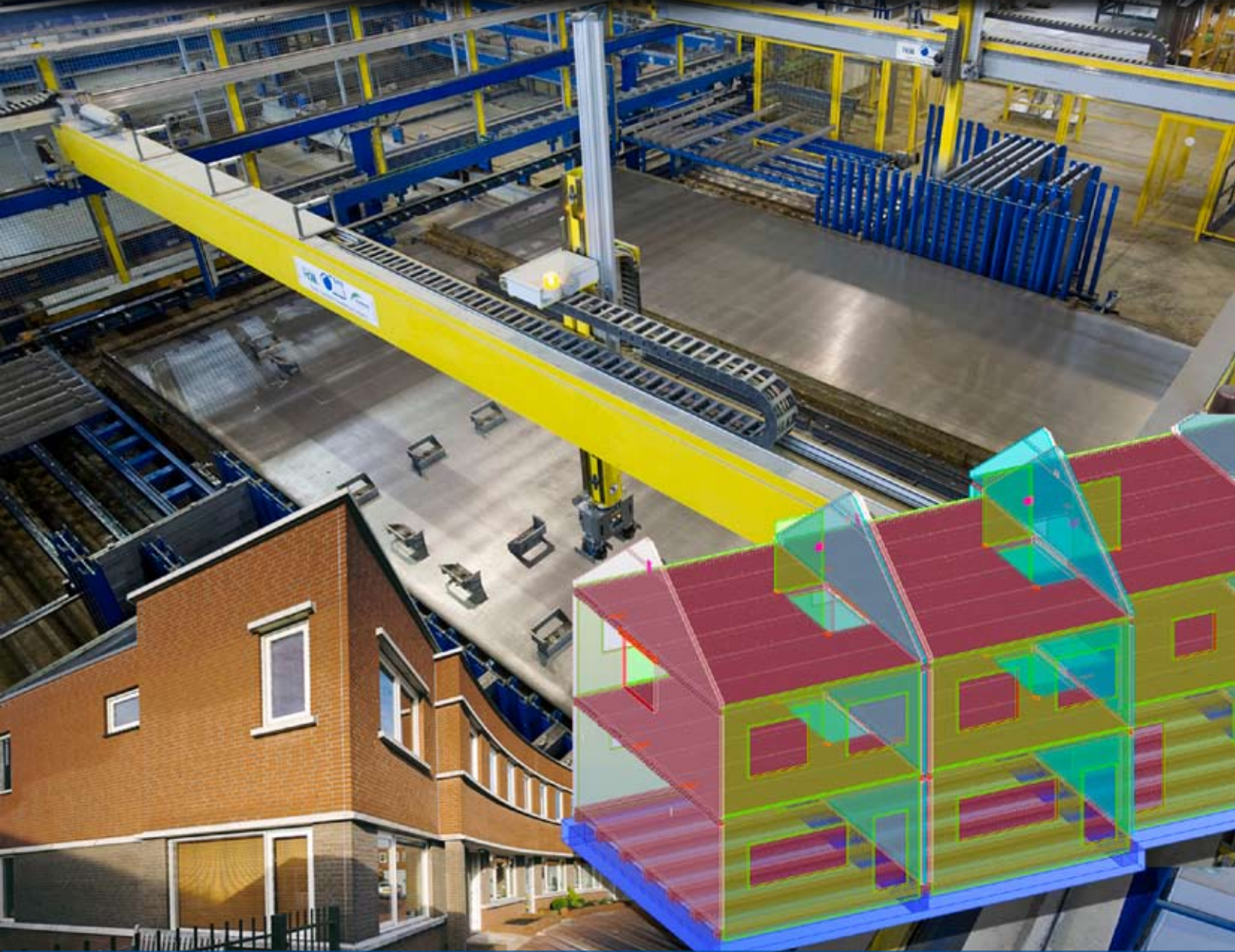




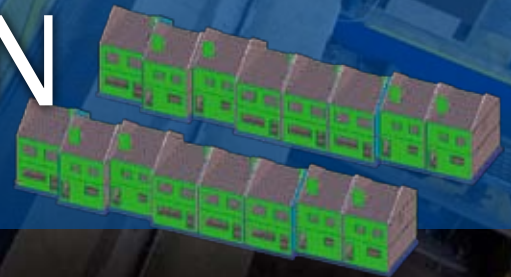
**TEKLA**® Structures



TEKLA STRUCTURES IN PRACTICE:

**HEEMBETON**

THE NETHERLANDS



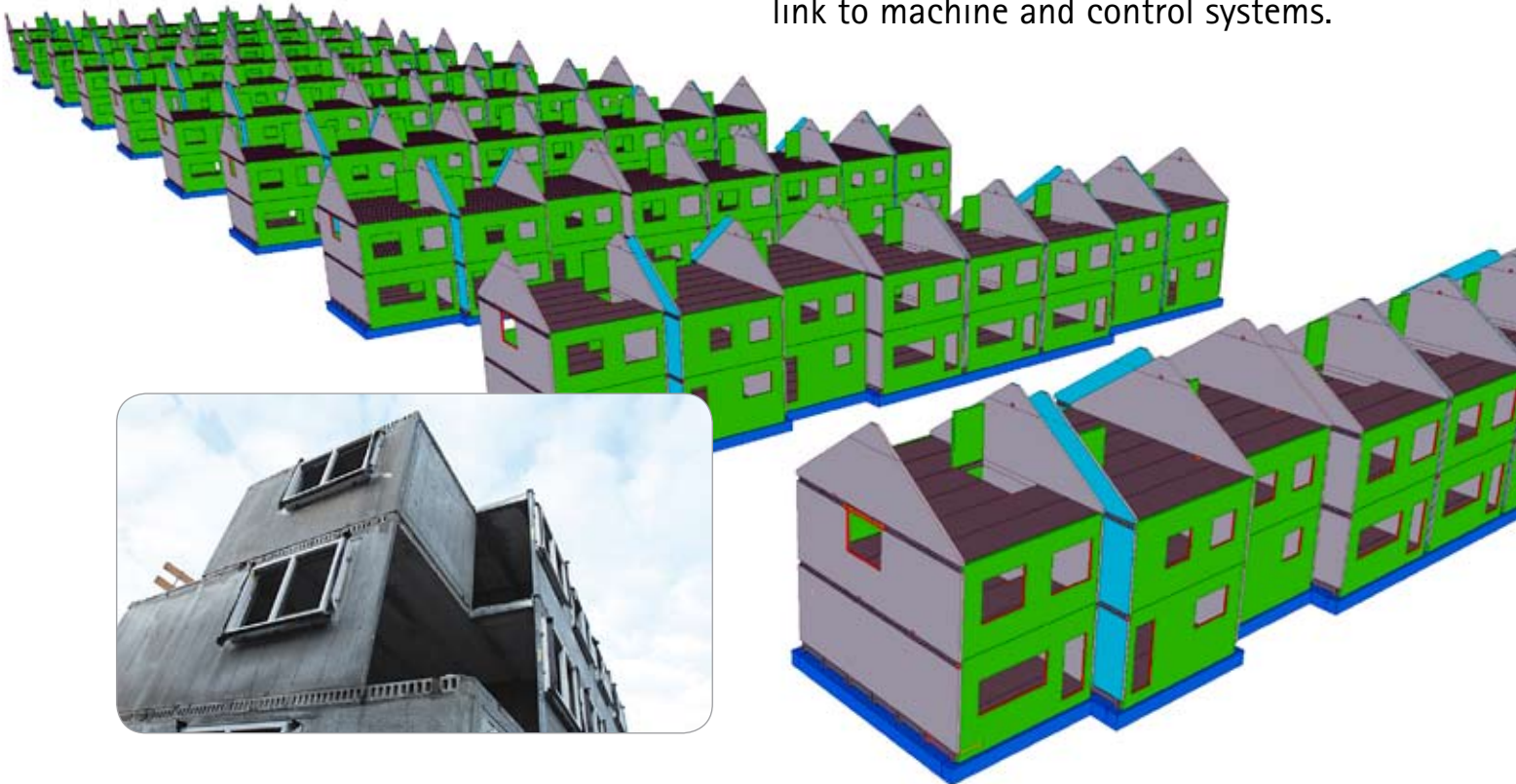


**TEKLA** Structures

# FASTER FROM DESIGN TO MANUFACTURE



> Number-one precast concrete frame producer in The Netherlands, Heembeton, has used Tekla Structures BIM (Building Information Modeling) software since 2007. With the help of the software the company will speed up their design-to-manufacture process. This can happen thanks to several technological advantages that Tekla provides, not the least of which is a highly productive link to machine and control systems.





> "By linking Tekla Structures via Unitechnik to our automated production machinery, we aim to take a precast unit from final design through to manufacture by SAA control system in just a day," says **Hans Pieters**, Operation Manager at Heembeton.

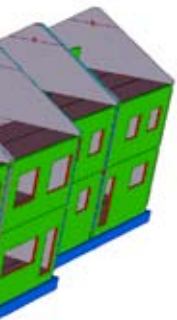
They have been the number-one precast concrete frame producer in The Netherlands for the last 40 years and hold 60% of the Dutch precast residential market. The company started to use Tekla Structures in 2007, updated to version 15 in the end of April 2009, and are positive about making their design-to-manufacture process faster than before.

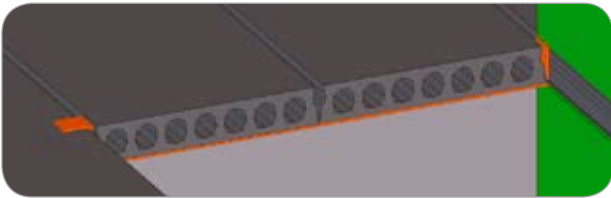
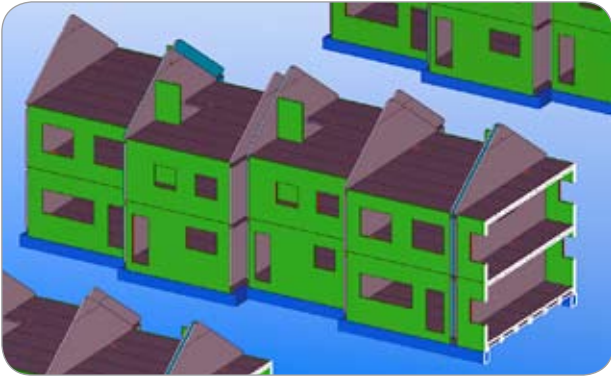


## ALL IN ONE MODEL

> Tekla Structures is an open system that enables brisk development for the precast industry. One of the biggest advantages for Heembeton is the Tekla database, which stays so small in file size that a complete project including many housing units can fit into just one database file. This is a definite advantage for their project management.

Another important thing for Heembeton is the multi-user possibility that Tekla offers. The same model can be accessed and modified by several users at the same time on different locations, and updates can be reviewed and commented on by any member of the project team via web models using a simple viewer application.





## LESS PREPARATION, MORE HOUSES

> Heembeton describes themselves as the most modern plant in Europe for the production of precast structural concrete products for residential buildings. In 2007, some 30,000 wall, floor and façade elements left the plant in Lelystad; by the end of 2010 this number is expected to increase significantly. For this they have invested in Tekla Structures software and two multi-functional shuttering robots (MFSR) designed and installed by SAA Engineering, Sommer Anlagentechnik, and Hobl.

"The learning curve with Tekla Structures is much better than with our previous system," Pieters continues. "Compared to that, we are looking at a promising improvement in efficiency. Change management is now more in control and drawings are needed only for checking. For production purposes there is no hardcopy needed; everything is transferred by means of digital data."

"We are strongly investing in this kind of development as there are big Dutch contractors seeking cooperation in BIM environment and we're trying to get middle-sized contractors interested in 3D benefits too. Web-model functionality is of special interest to us; very soon our erection people will start to use the Tekla Structures Web Viewer model. We aim to reduce our preparation time from 14 to 10 weeks and increase our production volume from 7 to 10 concrete-frame houses in one week," he concludes.

> *"FOR PRODUCTION PURPOSES THERE IS NO HARDCOPY NEEDED; EVERYTHING IS TRANSFERRED BY MEANS OF DIGITAL DATA."*

*- Hans Pieters,  
Operation Manager at Heembeton*



> Part of the CRH Group, Heembeton is a market leader in the construction of prefabricated housing in The Netherlands. Some 200 people are involved in the production of high-quality walls and façades at the Lelystad site. During its 40 years of operation, Heembeton has produced more than 160,000 carcasses for their customers in the Netherlands, Germany, Belgium and Luxembourg.

Heembeton supplies two types of prefab carcass: MaatBeton is a comprehensive tailor-made solution for constructing both the carcass of a building and elements that can be used as façade elements or as gable walls. The SmartBeton concept is based on a specially developed software package that enables modeling anything from an individual dwelling to a full-scale residential construction project. By introducing this new concept, Heembeton has succeeded in bringing together the benefits of conventional construction methods, such as poured concrete construction, and the use of calcium silicate blocks, with the unique characteristics of prefabricated concrete.

Read more at: [www.heembeton.nl](http://www.heembeton.nl)



➤ *"BY LINKING TEKLA STRUCTURES TO OUR AUTOMATED PRODUCTION MACHINERY, WE AIM TO TAKE A PRECAST UNIT FROM FINAL DESIGN THROUGH TO MANUFACTURE IN JUST A DAY."*

*- Hans Pieters, Operation Manager at Heembeton*

## EFFICIENT LINK TO PRODUCTION

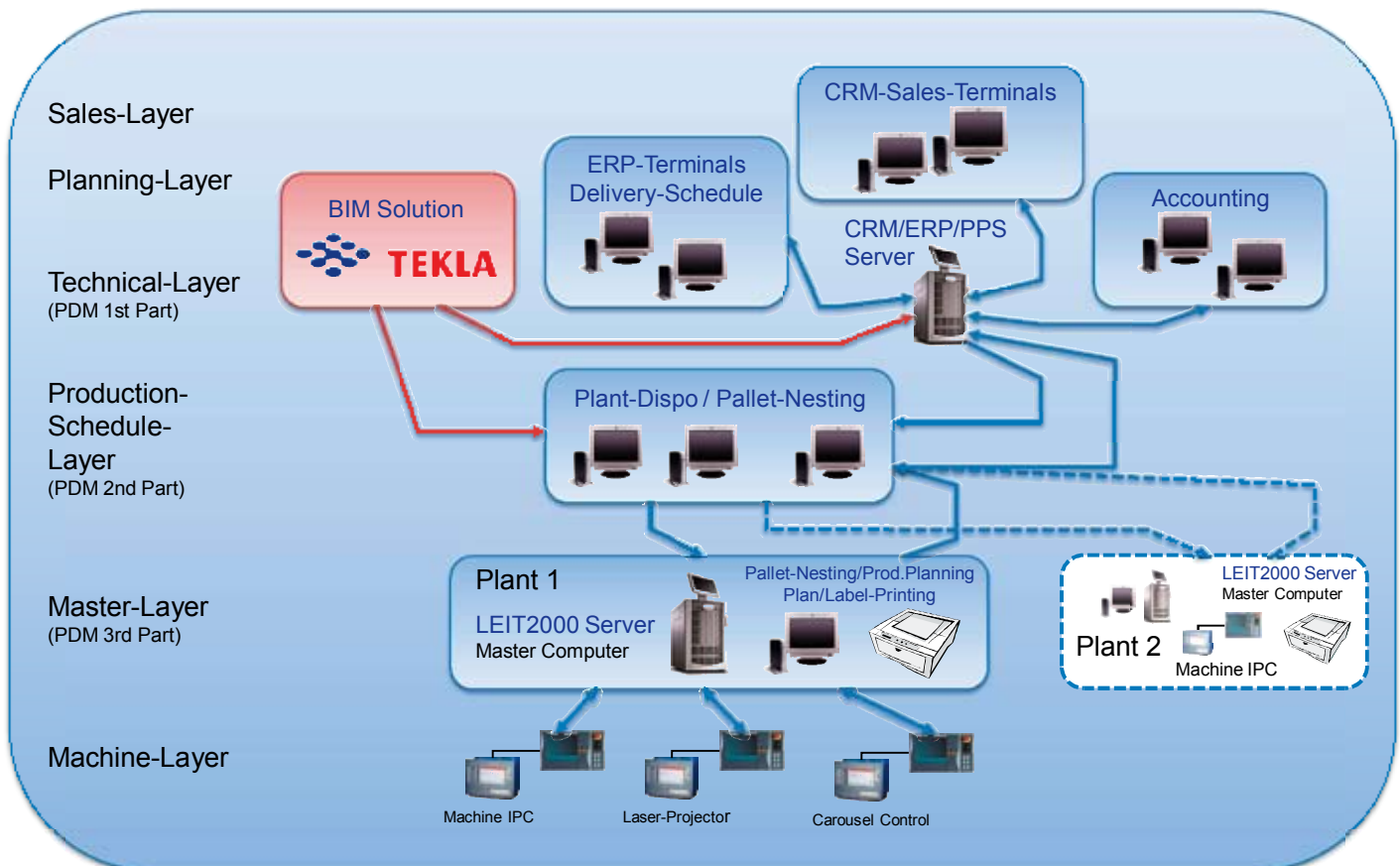
➤ At Heembeton, the precast concrete data is transferred from the Tekla model via a Unitech link to the company's ERP system and again via Unitech to SAA control system (Leit 2000), which controls the shuttering robot (SAA, Sommer, and Hobi) as well as straightening and cutting machines. "The Unitech link works fine with Tekla," confirms Pieters. The company envisions building up its precast production to take after assembly-line production in car factories.

Installing new robots to the existing system has considerably reduced the shuttering times. A common formwork and magnet transport system, controlled by a

master computer in the SAA system, flexibly supplies for the two robots. The robots, for example, calibrate the position and height of the pallets, plot on edges and parts that cannot fit the formwork, position magnetic boxes for windows and doors, and set and lock to millimeter precision the formwork on the pallet. The information for this can be derived from the BIM (building information model) designed and detailed in Tekla Structures.

In the future, all embedded parts, such as power outlets, will also be designed with Tekla and positioned in elements by the robots. At Heembeton, the elements scheduled for manufacture are broken into categories according to their complexity and time required for processing. After the form parts have been positioned and plotted, the master computer linked to the design system divides the pallets into processing lines according to current status. A box, which contains the required embedded parts, is prepared for each wall and floor element and accompanies the pallets to the processing station; the box also contains the drawings and labels automatically printed out from the control system. The work flow for the design, precision planning, preliminary work, and labeling is optimal.

### Interfacing with Heembeton precast concrete production system:

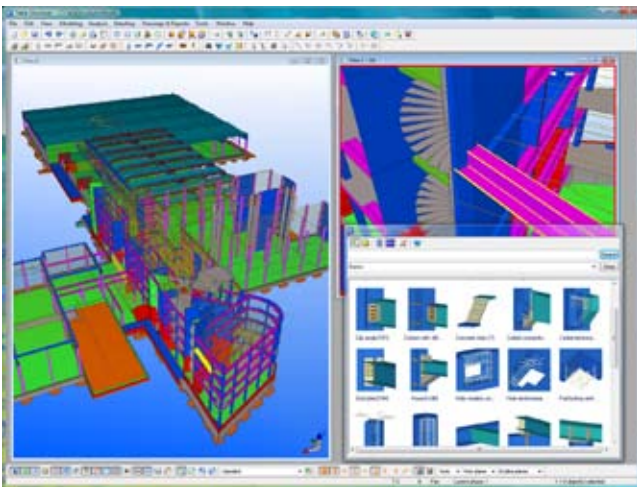


# TEKLA STRUCTURES – INTELLIGENT 3D MODELING



> Tekla's model-based software products make customers' core processes more effective in building and construction and infrastructure management. **Tekla Corporation** has area offices and partner organizations worldwide. International operations account for more than 80% of net sales. Founded in 1966, Tekla is one of the longest operating software companies in Finland.

> Tekla's technology creates new opportunities for the construction industry. **Tekla Structures**, the most advanced BIM (Building Information Modeling) software on the market, provides an accurate, dynamic, and data-rich 3D environment that can be shared by contractors, structural engineers, steel detailers and fabricators, as well as concrete detailers and manufacturers. The highly detailed as-built structural models created in Tekla Structures enable the highest level of constructability and production control. Centralizing model and non-model based data into the model allows for more collaborative and integrated project management and delivery. This translates into increased productivity, elimination of waste, and an enhanced value for structural modeling.



## CONTACT:

Tekla Corporation (HQ)  
Metsänpojankuja 1, P.O. Box 1  
FI-02131 Espoo, FINLAND  
Tel. +358 30 661 10  
Fax +358 30 661 1500



Find your local Tekla contact at:

[www.tekla.com](http://www.tekla.com)